

**MASTER PLAN
PROPOSAL
FOR THE
DR. GEORGE B. HAINES
MEMORIAL PARK
BARRINGTON, R.I.**

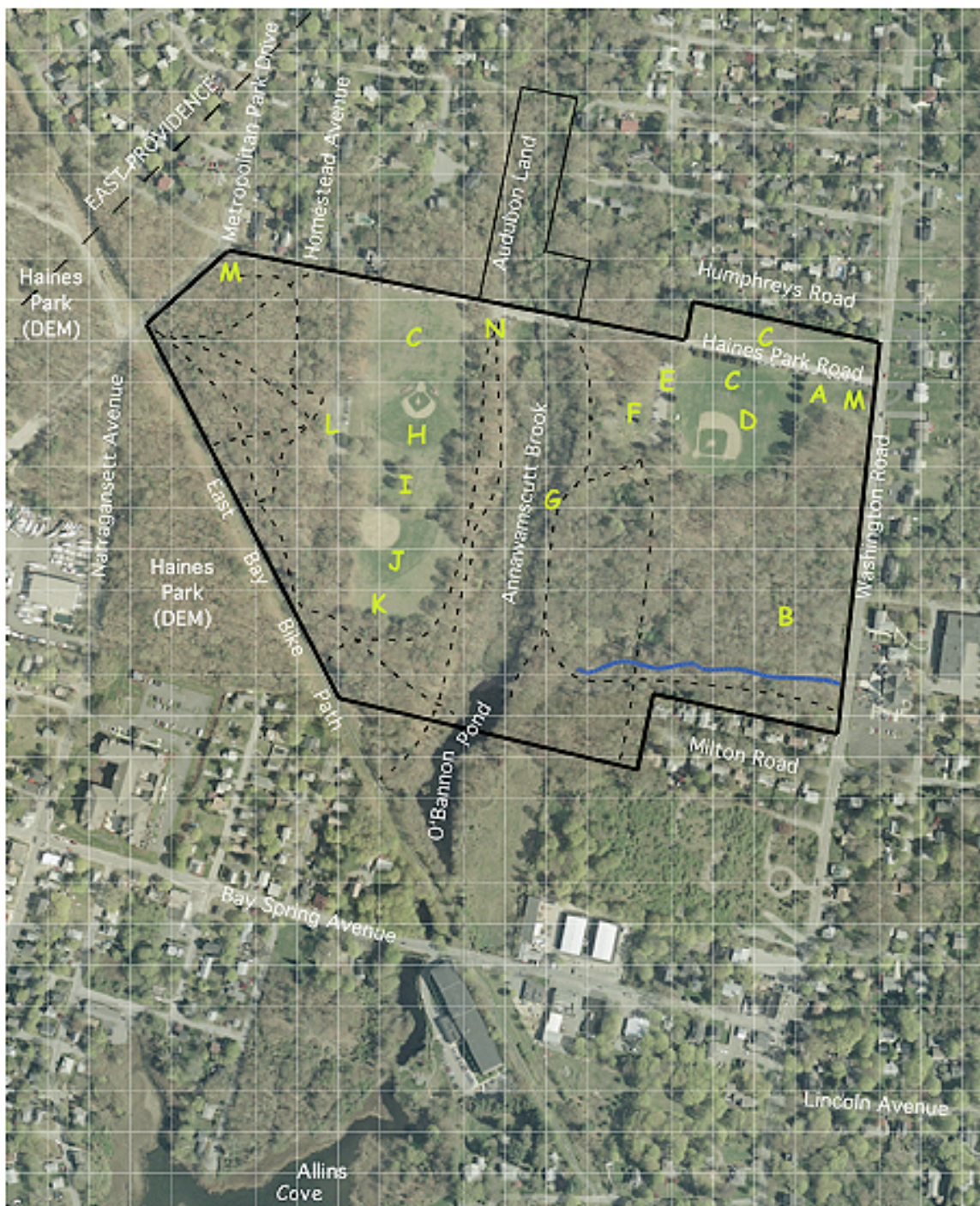


**DEVELOPED BY THE
FRIENDS OF THE DR. GEORGE B. HAINES
MEMORIAL PARK**

JANUARY 2006

TABLE OF CONTENTS

AERIAL VIEW OF HAINES MEMORIAL PARK	1
PROPOSAL OVERVIEW	2
PROPOSAL SPECIFICS:	
1. RESTORATION	3
2. MAINTENANCE	5
3. BALANCED USE	6
4. MANAGEMENT	7
ATTACHMENTS	8
1, PHOTOGRAPHS OF EXISTING CONDITIONS	9
2. SAVE HAINES PARK PETITION	16
3. INCORPORATION PAPERS FOR THE FRIENDS OF THE DR. GEORGE B. HAINES MEMORIAL PARK	26
4. DEED FROM IDA M. HAINES TO THE STATE OF RHODE ISLAND (COPY)	29



- | | | |
|--------------------------------|-----------------------------------|---------------------------|
| A - flag pole | G - location of former footbridge | M - former entrance signs |
| B - overgrown picnic/fireplace | H - Little League ball field | N - parking lot/pull-out |
| C - multi-use field | I - picnic grove | — drainage |
| D - Senior League ball field | J - girls softball field | - - - trail |
| E - east parking lot | K - proposed dog park | |
| F - fireplace/picnic field | L - west parking lot | |

Haines Park, Barrington, Rhode Island



Base Photograph from
Google Maps, 2005

PROPOSAL OVERVIEW

The FRIENDS OF THE DR. GEORGE B. HAINES MEMORIAL PARK (incorporated in Rhode Island, December 22, 2005) submit the following proposal to be incorporated into a Master Plan for the park. We offer it for consideration by the Parks & Recreation Commission, the Barrington Town Council, and other town bodies in response to the request made by Melissa Horne, chair of the Parks & Recreation Commission, at the Commission's December 15, 2005 meeting.

IN GENERAL, we propose:

- ❖ FIRST, that the town allocate the funds necessary to **restore** the park to its pre-lease condition (1992);
- ❖ SECOND, that the staff, equipment, and operating budget of the Barrington Department of Public Works be expanded to enable the Department to **maintain** the park from now on in accordance with the existing lease agreement with the state.
- ❖ THIRD, that the park's existing **balance** of areas for active and passive recreation be preserved, and that no additional areas be dedicated for exclusive use by any group, especially any group that requires fences. Fences by definition restrict general public use of the park as specified in the deed. To the extent possible, fields should be multi-purpose and multi-seasonal.
- ❖ FOURTH, that a Haines Park **management** committee be established to ensure continuing attention to any new proposals for changes in the park, and that this committee should reflect a balance of representation from the town as a whole.

PROPOSAL SPECIFICS:



RESTORATION

IN PARTICULAR, we propose that restoration of the park include the following:

- a. Repairing, leveling, and resurfacing the two existing parking lots, and replacing environmentally unfriendly crushed road asphalt with stone dust on a gravel base;
- b. Erecting and using appropriate security gates at each of the lots to restrict night-time access by vandals and trash dumpers;
- c. Prohibiting placement in the lots of storage pods or other containers that take up needed parking spaces;
- d. Replacing metal highway guardrails with timber barriers appropriate for use in a park;
- e. Extending the line of these barriers or placing large boulders where necessary to prevent unauthorized vehicular access and damage to grass fields;
- f. Clearing overgrowth from the original existing trails on the east side of Annawamscutt Brook;
- g. Replacing the wooden footbridge over the brook to reconnect the east and west sides of the park, so that regular use of the trails by walkers can keep them open, as they are on the west side now. The Scouts have indicated interest in this project.
- h. Removing dead and fallen trees;
- i. Removing undergrowth where it has become a fire hazard in the woods;
- j. Removing invasive vines, such as bittersweet, that are killing the big trees that should be preserved in the woods;
- k. Investigating the possibility of clearing *Phragmites* and other invasives from the brook and pond;
- l. Repairing Haines Park Road, as specified in the lease agreement;

- m. Posting and enforcing “No Parking On Road” signs—an important safety issue for the neighborhood and for children participating in sports;
- n. Replacing Haines Memorial Park entrance signs at each end of Haines Park Road, where the signs used to be. The signs should be of wood and might be placed on a landscape mound perhaps to be maintained by a garden club.
- o. Removing and replacing dugouts;
- p. Repairing or removing the cement drinking fountains at each of the ball fields;
- q. Replacing picnic tables in the grove of trees on the west side of the park and in the open area of the east side next to the parking lot;
- r. Repairing the historic WPA-built stone fireplaces that are in the woods and in the picnic area on the east side of the park;
- s. Restoring the flagpole on the east side of the park near Washington Road.



MAINTENANCE

We propose that maintenance of the park include, but not be limited to, the following:

- a. Regular patrols by the Department of Public Works
 - to remove and chip dumped brush piles;
 - to remove graffiti and repair vandalism;
 - to remove litter and dumped household or other trash;
- b. Continuing the present “Trash In/Trash Out” (no trash barrels) policy that is working well at Haines Park now and that has proved to be a successful anti-litter policy at parks and beaches all over the state;
- c. Implementing a regular program of reseedling, fertilizing, and aerating grass fields by the Department of Public Works, following assurance from the Conservation Commission that such fertilization will not negatively impact the brook, pond, and the Allin’s Cove restoration project downstream;
- d. Investigating and perhaps implementing irrigation systems for the fields;
- e. Implementing a regular late-fall program of leaf removal from grass fields, parking lots, and along timber barriers and roadsides;
- f. Regular maintenance of the two parking lots;
- g. Implementing a regular program of tree pruning and planting of new shrubs and trees as buffers and for park aesthetics;
- h. Continuing night-time police patrols to curb vandalism and other illegal activities such as under-age drinking parties;
- i. Regular repainting of historic red cement bollards saying "Haines Park" at each parking lot entrance and at the access point from the pull-out next to the brook.



BALANCED USE

There should be official recognition that grass fields are to be kept as open as possible so that they may be used for a wide range of sports during various seasons of the year, as well as year-round for passive recreational uses such as walking, kite-flying, picnicking, sky-watching, pick-up ball games, Frisbee-throwing, sunbathing, snowman-making, cross-country running, and cross-country skiing;

- a. That no buildings or sheds, lighting, fences, advertising, banners, vending machines, concessions, loudspeakers, electronic scoreboards or cell towers be permitted in the park;
- b. That storing or abandoning sports equipment, such as football sleds and lacrosse nets, be prohibited in the park, because they are obstacles to other uses of the park fields;
- c. That the chain-link outfield fence around the softball field at the back of the west side fields be removed to expand the field space available for other uses;
- d. That the installation of a fenced dog park be reconsidered, because fencing the back section of that grass field would have the effect of excluding all other possible uses for this area—for example, for football practice sessions and other sports uses that are by their nature disruptive when scheduled in areas next to houses. This area is desirable for such purposes because no houses are nearby.
- e. That, without the two fences (c. and d.), there be consideration of the addition of one **multi-purpose, unfenced** athletic field in this area of the west side of the park.



MANAGEMENT

In order to preserve the character of Haines Memorial Park in accordance with the deed, a Haines Memorial Park Management Committee should be formally established as an advisory body to the Town Council. This committee should include a mix of representation from the town such as park abutters, Friends of the Dr. George B. Haines Memorial Park, Conservation Commission, Appropriations Committee, Department of Public Works, and Parks & Recreation Commission, with a Town Council liaison.

- a. There should be recognition by the members of this committee that the general recreational interests of the town would not be served by concentrating facilities for any one sport league in Haines Memorial Park. Such a concentration would result in an unfair burden of traffic and parking problems for one neighborhood. Rather, the goal should be to spread out sports usage during different seasons and in different areas of the town, giving fields a chance to be rested and rehabilitated, and sharing the impact of seasonally intense sports uses among different neighborhoods and times of year.
- b. The park should be officially rezoned from “Open Space Active” to “Open Space Active and Passive” to correctly reflect its historical and present usage as a mix of active and passive recreation.
- c. The new Haines Memorial Park Management Committee should also be responsible for coordinating volunteer efforts to help clean up and maintain the park. Volunteers might include Scouts, garden clubs, neighborhood groups, and sports leagues.

ATTACHMENTS

We support this proposal with the following attachments:

- Photos taken in 2005 showing the existing condition of the park following 13 years without a management plan or budget for its maintenance
- The Save Haines Park petition signed by 250 townspeople five years ago to indicate that they wanted “ to see Haines State Park remain as it is: a multi-purpose park without more restricted-use fields than the three now existing there. We want the woodlands to remain, and the grass fields to stay open for all to use.”
- Incorporation papers for the Friends of the Dr. George B. Haines Memorial Park
- Deed from Ida M. Haines to the State of Rhode Island (Copy)

This proposal is respectfully submitted
by the Friends of the Dr. George B. Haines Memorial Park

cc: Barrington Town Council
Barrington Appropriations Committee
Barrington Conservation Commission
Barrington Department of Public Works
Barrington Fire Department
Barrington Land Trust
Barrington Planning Board
Barrington Police Department
Barrington Preservation Society
Barrington Town Planner
Barrington Zoning Board

Questions or comments about this proposal may be directed to any member of the Board of the Friends of the Dr. George B. Haines Memorial Park: Steven Clemens, 30 Homestead Avenue, 437-1579; Katherine Imbrie, 20 Humphreys Road, 433-4501; Katherine Kloc, 40 Salisbury Road, 433-5592; William J. Oehlkers, 80 Rogers Avenue, 433-0058; Julie Vanier, 16 Humphreys Road, 437-2313; and Elizabeth Warren, 18 Homestead Avenue, 433-4592.

Mail for the Friends of the Dr. George B. Haines Memorial Park should be directed to William J. Oehlkers, 80 Rogers Avenue, Barrington, RI 02806.



Football sled abandoned in the Senior League baseball outfield.



Storage pod left in east parking lot from July to November.



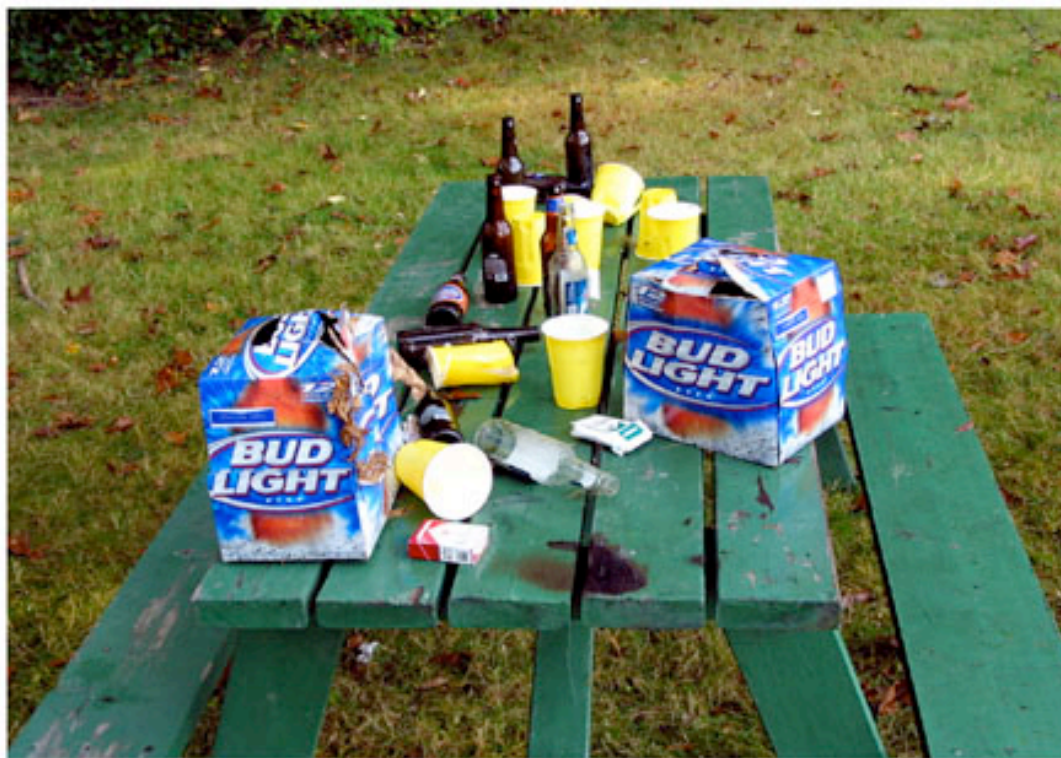
Brush dumped in parking pull-out next to Annawamscutt Brook.



Trash dumped in the same area next to the brook.



Dumped construction materials remained in parking pull-out near the brook for months.



Trash from a late-night party.



Historic Haines Park marker shows weather damage from 13 years without a coat of paint.



Entrance to west parking lot shows deep potholes in crushed asphalt surface.



At the end of December, leaves remain piled in east parking lot along highway guard rail.



One of many piles of brush dumped in the park.



Graffiti on tree next to west parking lot has been there since spring.



Multi-use field shows vehicular vandalism that remains unrepaired.



Broken and fallen trees are testaments to the ongoing neglect of the park.

